

# Your Housing Pathways

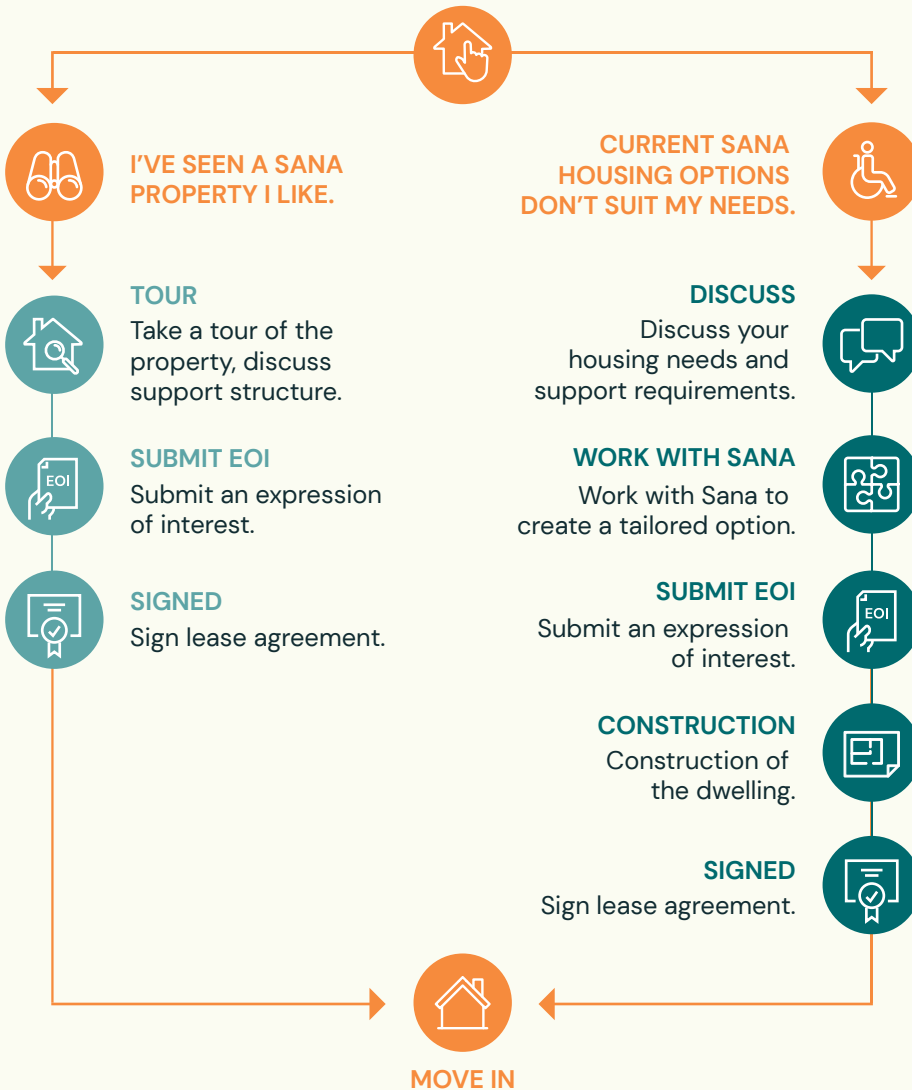
Working with us to create the right home for you.



## GET STARTED

I'm keen to pursue SDA.

### INVESTIGATE HOUSING OPTIONS



### FUNDING APPLICATION

Apply for SDA Funding  
\*Refer to SDA Timeline

Approved

## What does it Cost?

- 100% of funding you receive for SDA is specifically to cover cost of housing.
- Amount of SDA funding varies depending on a range of factors including building type, location, how many people you live with and additional features.
- A rent contribution is required, being 25% of the disability support pension received plus any Commonwealth government rent assistance.
- A share in the cost of utilities applies when there is shared housing.